

Admissions

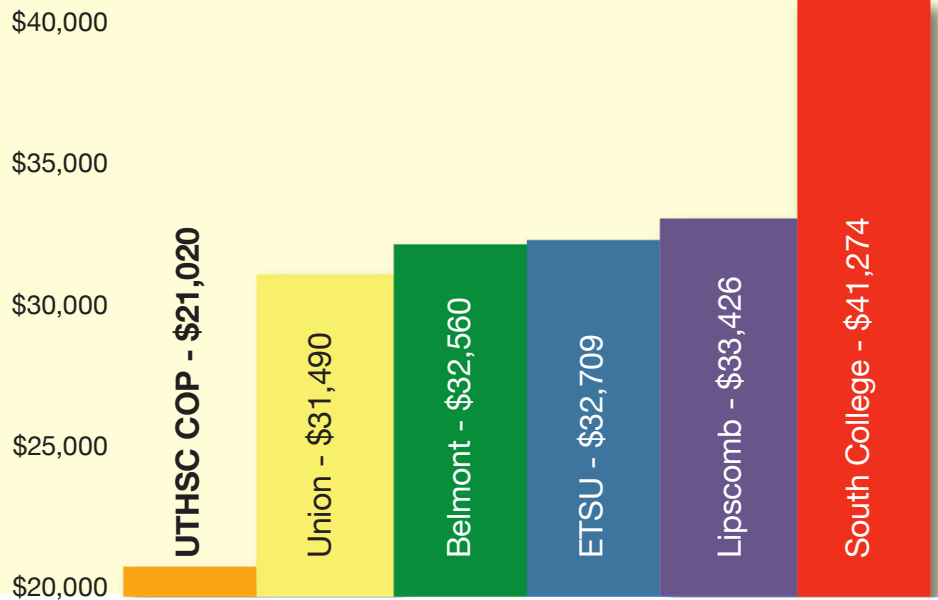
How the UTHSC College of Pharmacy provides the best return on your education investment



At the University of Tennessee Health Science Center College of Pharmacy, state-of-the-art learning facilities coupled with an outstanding faculty enable our students to learn to be the best from the best. Check out the data to see how the UTHSC COP compares to the other in-state pharmacy schools.

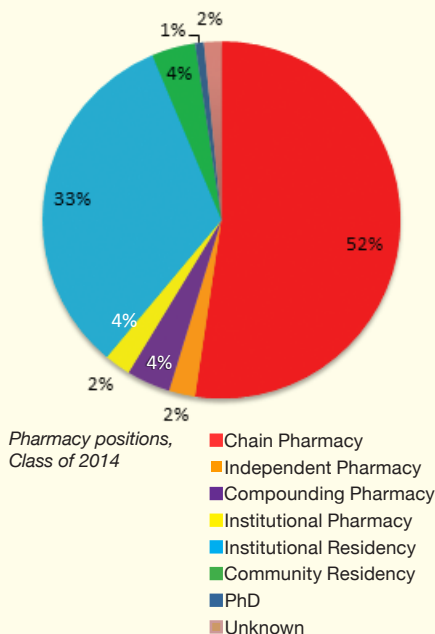
Annual Tuition Comparison

The chart below shows the 2014 tuition costs for the six colleges and schools of pharmacy located in Tennessee. Information sourced from each institution's website, September 2014.



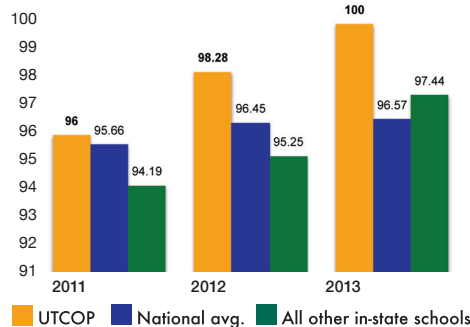
After Graduation

more than 98 percent of our students reported employment within three months.



The University of Tennessee is an EEO/AA/Title VI/Title IX/Section 504/ADA/ADEA institution in the provision of its education and employment programs and services. E073606(2015-004WO# 555)

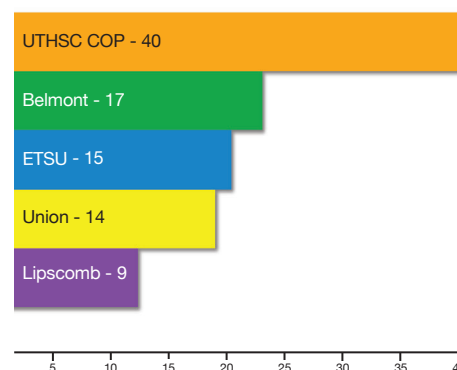
NAPLEX Pass Rate



The North American Pharmacist Licensure Examination (NAPLEX) is a standard examination created by the National Association of Boards of Pharmacy to help individual state boards of pharmacy assess an individual's competency and knowledge so that he or she may be given a license to practice (NAPLEX, 2013). In 2013, UT College of Pharmacy graduates achieved a 100 percent first time pass rate.

National Association of Boards of Pharmacy, <http://www.nabp.net/programs/examination/naplex/> (accessed October 24, 2013)

2014 ASHP residency placement data



According to the American Society of Health-System Pharmacists, in 2014 more UTHSC COP student pharmacists were placed in residencies than any other in-state college or school of pharmacy.

For PGY1 residencies, the UTHSC COP was in the top 10 percent of all colleges (n=139) in the nation for number of students who initially matched, with 40 graduates matching across the country. Only 13 colleges of pharmacy in the nation produced more residents this year, and only four of those 13 had a higher match percentage rate than UT's 75.5 percent matched.

By the numbers

A comparison of the six in-state pharmacy colleges and schools for the year 2014

Category	University of Tennessee ¹	Belmont ²	East Tennessee State ³	Lipscomb ⁴	South ⁵	Union ⁶
Year Students Enrolled	1898	2008	2007	2008	2012	2008
National Ranking ⁷⁻⁹ US News & World Report Smart Rank National Institutes of Health	17 11 30	Unranked 122 Unranked	Unranked 60 Unranked	Unranked 116 Unranked	Unranked NA Unranked	Unranked 113 Unranked
Annual In-state Tuition	\$21,020	\$32,560	\$32,709	\$33,426	\$41,274	\$31,490
Accreditation Cycle (years) ¹⁰	6	1	2	2	1	2
Full-time Faculty Members with BPS Certifications ¹¹	22	9	6	8	5	9
Health Science Center Campus	Yes	No	Yes	No	No	No
First-time Board Pass Rate ¹² 2013 2012	100% 98.28%	100% 89.4%	98.7% 97.4%	94.2% 93.1%	NA NA	95.5% 85.4%
Percent of Students Reporting Jobs within 3 Months of Graduation	>98%	Not Disclosed	Not Disclosed	Not Disclosed	NA	Not Disclosed
Residency Attainment Rate (matched/applied) ¹³	PGY1 - 40/53 PGY2 - 9/10	PGY1 - 17/28 PGY2 - 2/6	PGY1 - 15/22 PGY2 - 4/5	PGY1 - 9/13 PGY2 - 1/2	NA	PGY1 - 14/17 PGY2 - 3/3
International Rotations	Yes 12 different countries	None	Yes	None	None	None
COP Graduate Program	Yes	None	Yes	None	None	None
Dual/Joint Degree Programs	PharmD/PhD PharmD/MBA	None	PharmD/MPH PharmD/MBA	PharmD/PhD	None	PharmD/MBA
Length of Advanced Experiential Training	1.5 years	1 year	1 year	1 year	1 year	1.5 years

¹ as of 9/19/2014
² All websites listed below were accessed in September 2014
³ 1. <http://www.utsc.edu/pharmacy/>
⁴ 2. <http://belmont.edu/pharmacy/index.html>
⁵ 3. <http://www.atsupharmacy.com>
⁶ 4. <http://www.lipscomb.edu/pharmacy>
⁷ 5. <http://www.southcollegein.edu/pharmacy/main.htm>
⁸ 6. <http://www.uu.edu/programs/pharmacy/>
⁹ 7. <http://pharmacy-schools.findthebest.com/>
¹⁰ 8. <http://grad-schools.usnews.rankingsandreviews.com/best-graduate-schools/top-health-schools/pharmacy-rankings>
¹¹ 9. <http://www.aacp.org/resources/research/Documents/PharmacyFacultyResearchGrantData.htm>
¹² 10. https://www.acpe-accredit.org/shared_info/programsSecure.asp
¹³ 11. <http://www.bpsweb.org>
¹⁴ 12. <http://www.nabp.net/programs/examination/naplex/school-pass-rate>
¹⁵ 13. ASHP Residency Match Data 2014 (personal communication: J. Teeters, ASHP)

The University of Tennessee Health Science Center College of Pharmacy

881 Madison Avenue, Memphis, TN 38163 • (901) 448-6036
 1924 Alcoa Highway, Box 117, Knoxville, TN 37920 • (865) 974-2100
 193 Polk Avenue, Suite 2D, Nashville, TN 37210 • (615) 253-5600
www.utsc.edu/pharmacy fUTurePharmacist@utsc.edu

As Tennessee's only public, statewide, academic health system, the mission of the University of Tennessee Health Science Center (UTHSC) is to bring the benefits of the health sciences to the achievement and maintenance of human health to the citizens of Tennessee and the region. It pursues an integrated program of education, research, clinical care and public service.